

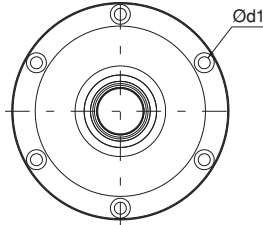


Referans Nr.	d	h	 d1	sıkma kuvveti clamping force		 (g)
				Nm	Kgf	
1060-090	90	22	M4	5	1250	730
1060-120	120	28	M6	14	2500	1840
1060-138	138	33	M8	35	4000	2860
1060-190	190	38	M8	35	6000	5460

**Ürün Nr. 1060 ER-EL Zero Clamp Gövde**

- Min. Bar 5.5
- Max. Bar 8

**Product Nr. 1060 ER-EL Zero Clamp Body**

- Min. Bar 5.5
- Max. Bar 8

