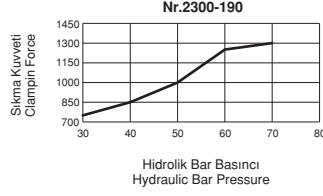
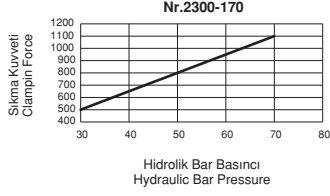
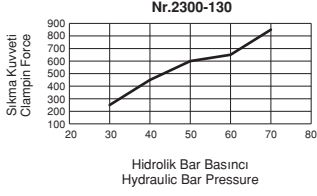


| Referans Nr. | A min-max | Strok | B | C | D | E | F | ØG | H | K | K1 | N | N1 | S | S1 | M | Q1 | Q2 | (kg) |
|--------------|-----------|-------|-----|-----|----|-----|----|-----|-----|----|----|-----|----|-----|-----|-----|----|----|------|
| 2300-130 | 162-142 | 10x2 | 90 | 83 | 60 | 130 | 10 | 86 | 143 | 9 | 22 | 76 | 64 | 106 | 60 | M8 | 11 | 6 | 8.50 |
| 2300-170 | 210-170 | 20x2 | 100 | 96 | 78 | 170 | 12 | 98 | 174 | 11 | 30 | 136 | 74 | 106 | 80 | M10 | 11 | 8 | 14 |
| 2300-190 | 242-202 | 20x2 | 125 | 101 | 80 | 190 | 16 | 121 | 181 | 11 | 36 | 144 | 96 | 106 | 100 | M12 | 13 | 8 | 21 |

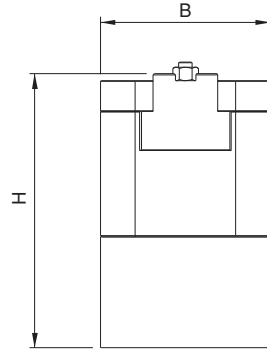
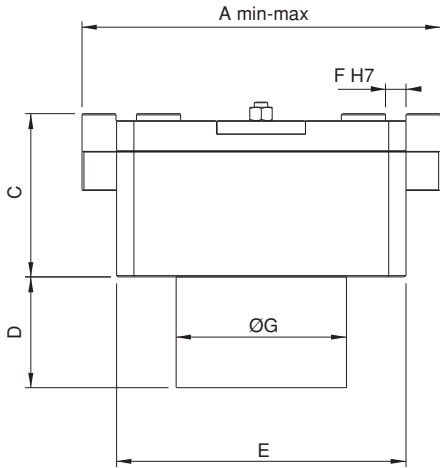


Ürün Nr. 2300 Hidrolik Çift Açılır Mengene

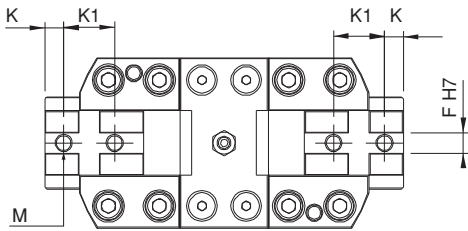
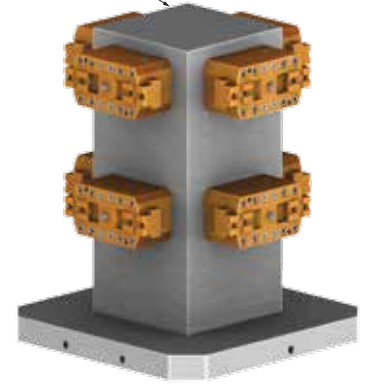
- Ürün işlem yapılacak malzemeyi sabitlerken aynı zamanda da merkezleme yapmaktadır. Bu sistemin avantajı özellikle dış çap ölçüleri değişken malzemelerde merkez değişmeden işlem yapılabilir. Diğer özelliği ise yumuşak çenelere işlenecek parçanın formu uygulanabilir. (1-2-3 şekillerde görüldüğü gibi.)
- Hareketli yüzeylerin tamamı hassas taşlanmış ve sertleştirilmiştir.
- Sistem hidrolik çalışır
- Yağ girişi - Yağ dönüş
- Siyah Kaplama

Product Nr. 2300 Hydraulic Centering Vice

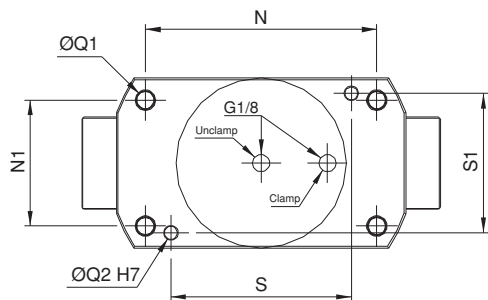
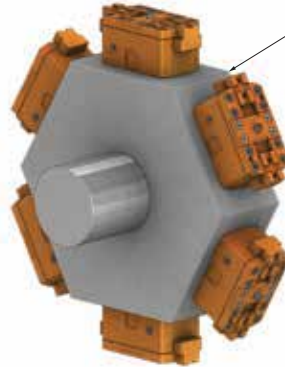
- This product fixes the material to be processes and at the same time it makes centering. The advantage of this system specially shows itself when making machinings of the materials having different outer diameter measurements as it implements this process without changing the center. It's other characteristic is to apply the form of the piece to be machined with soft jaws (as seen in Figures: 1-2 and 3).
- Entire moving surface is sensitively grinded and hardened.
- Hydraulic system works
- Oil inlet - Oil outlet
- Black coating



Şekil 1
Figures 1



Şekil 2
Figures 2



Şekil 3
Figures 3

