


Referans Nr.	D1 -0.02 -0.05	D	H	H1	M	
0950-06001LS	8	11.5	4	5	M6	4
0950-08001LS	12	15.5	5	5	M8	8
0950-12001LS	18	24.5	8	6	M12	27
0950-16001LS	22	31.5	10	7.5	M16	51
0950-06001SM	8	11.5	4	5	M6	4
0950-08001SM	12	15.5	5	5	M8	8
0950-12001SM	18	24.5	8	6	M12	27
0950-16001SM	22	31.5	10	7.5	M16	51

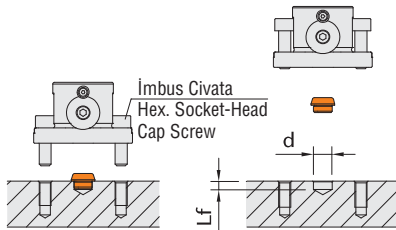
#### rn Nr. 0950 5-Eksen Blok Baęlama Konumlama Burcu

- Taşlanmış Tolerans  $\pm 0.02$
- Standart Tolerans  $^{+0.1}_0$

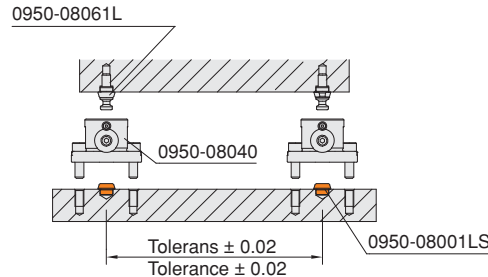
#### Product Nr. 0950 5-Axis Clamping Block Locating Bushings

- Stoning Tolerans  $\pm 0.02$
- Standard Tolerance  $^{+0.1}_0$

#### Uygulama rneęi / Application Example



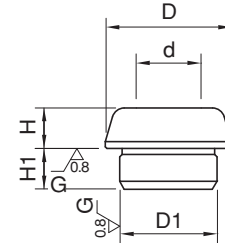
Referans Nr.	d (H7)	Lf
0950-06001LS	8	5.5
0950-08001LS	12	5.5
0950-12001LS	18	6.5
0950-16001LS	22	8



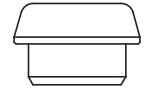
**LS**  
Taşlanmış  
Stoning



**SM**  
Standart  
Standard



**L**  
Taşlanmış  
Stoning



**S**  
Standart  
Standard

